

UNDERSTANDING THE DATA

In order to understand the indicators, it is necessary to know what is being measured and how. Detailed definitions and data sources inside the brochure provide a comprehensive definition of each indicator and an explanation of how and by whom the data are collected and measured.

Whenever possible, for each indicator, we report a number. We also report a percentage or rate for each indicator. This is simply the number of times the event occurs, divided by the total population of the county or state that could experience the event. We report the indicators as percents or rates in order to accurately compare groups of different population size.

For the majority of the indicators, we compare the county rate to the state rate. This is expressed as a percent above or below the statewide average for the indicator. When looking at these percents, it is important to understand that large percents resulting from the difference between the county rate and the state rate may be due to small numbers. This does not mean that these differences are not important, but that these differences should be interpreted carefully. **It should be noted that we chose not to compare the county rate to the state rate of four indicators because of small numbers.**

The comparison of the county rates to the state rates was computed by subtracting the value for the state rate from the value for the county rate, and then dividing that quantity by the value for the state rate. The results are multiplied by 100 for readability.



FOR MORE INFORMATION

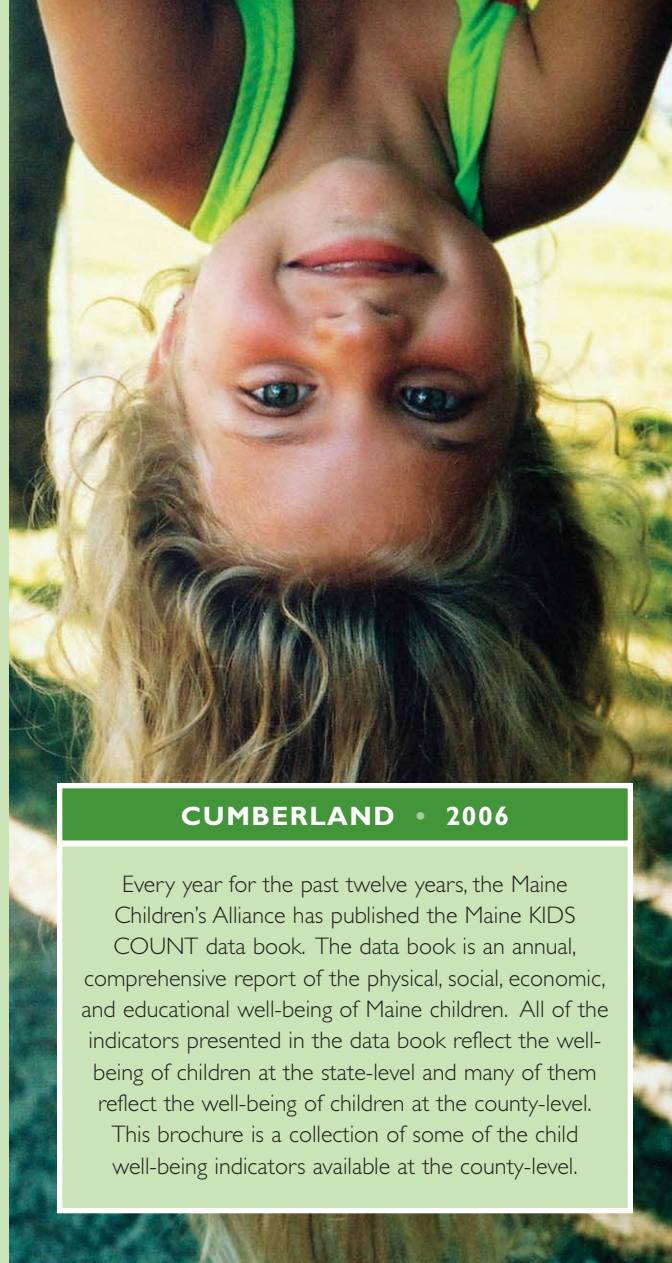
on the Maine Children's Alliance, the Maine KIDS COUNT project, or the data in this brochure, visit the MCA website at www.mekids.org or contact the office at (207) 623-1868.

THIS BROCHURE WAS MADE POSSIBLE WITH FUNDING FROM:

Bank of America



Maine KIDS COUNT



CUMBERLAND • 2006

Every year for the past twelve years, the Maine Children's Alliance has published the Maine KIDS COUNT data book. The data book is an annual, comprehensive report of the physical, social, economic, and educational well-being of Maine children. All of the indicators presented in the data book reflect the well-being of children at the state-level and many of them reflect the well-being of children at the county-level. This brochure is a collection of some of the child well-being indicators available at the county-level.

CUMBERLAND COUNTY

DEMOGRAPHICS

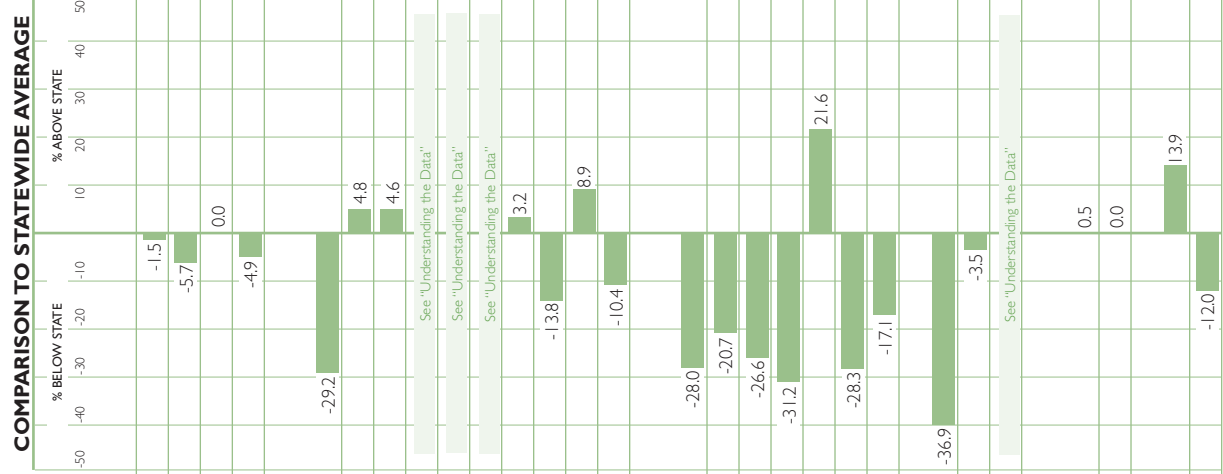
Total population - 2003 estimate	270,923				
Children age 0-17	58,400	21.6%	1,305,728	21.9%	-1.5
Children age 10-17	28,237	10.4%	144,320	11.1%	-5.7
Children age 1-14	44,814	16.5%	216,051	16.5%	0.0
Children age 15-19	18,461	6.8%	93,546	7.2%	-4.9
PHYSICAL AND MENTAL HEALTH					
Children participating in MaineCare, SFY 2005	17,977	28.9%	124,442	40.8%	-29.2
Live births for which prenatal care began in the first trimester, 2003	2,779	91.4%	12,072	87.2%	4.8
Low birth-weight infants, 2003	207	6.8%	904	6.5%	4.6
Infant mortality, 1999-2003 annual average *	15	5.1	68	5.0	See "Understanding the Data"
Child deaths (age 1-14), 1999-2003 annual average **	5	1.1	42	1.9	See "Understanding the Data"
Teen deaths (age 15-19), 1999-2003 annual average **	8	4.6	57	6.3	See "Understanding the Data"
High school students reporting alcohol use in the past 30 days, 2006		41.6%		40.3%	3.2
High school students reporting cigarette use in the past 30 days, 2006		16.8%		19.5%	-13.8
High school students reporting marijuana use in the past 30 days, 2006		23.3%		21.4%	8.9
Children (age 0-17) in the care or custody of DHHS, December 2005 *	429	7.3	2,350	8.2	-10.4

SOCIAL AND ECONOMIC STATUS

Children in poverty, 2003	6,105	10.3%	39,896	14.3%	-28.0
Children receiving TANF, December 2005	3,772	6.5%	23,282	8.2%	-20.7
Children receiving food stamps, December 2005	8,511	14.6%	56,823	19.9%	-26.6
School children receiving subsidized school lunch, 2005-06	9,670	24.0%	69,093	34.9%	-31.2
Median household income, 2003	\$47,669		\$39,212		21.6
Unemployment, 2004	5,210	3.3%	32,130	4.6%	-28.3
Teen pregnancies (females age 10-17), 2003 *	85	6.3	532	7.6	-17.1
Births to single teens (females age 10-19) who have not completed 12 years of school, 1999-2003 annual average *	71	4.1	575	6.5	-36.9
Arrests of children (age 10-17), 2004 *	1,612	57.1	8,539	59.2	-3.5
Arrests of children (age 10-17) for crimes against persons, 2004 *	28	1.1	145	1.0	See "Understanding the Data"

EDUCATION AND LEARNING

Public high school graduates, Class of 2004	2,604	87.8%	13,219	87.4%	0.5
Public high school dropouts, 2003-04	335	2.7%	1,678	2.7%	0.0
Public high school graduates planning to attend post-secondary school, 2003-04	2,000	78.8%	9,219	69.2%	13.9
Special education students (age 3-21), 2004-05	6,359	16.2%	37,573	18.4%	-12.0



	COUNTY		STATE		
	Number	Rate or Percent	Number	Rate or Percent	
	270,923		1,305,728		
	58,400	21.6%	285,615	21.9%	-1.5
	28,237	10.4%	144,320	11.1%	-5.7
	44,814	16.5%	216,051	16.5%	0.0
	18,461	6.8%	93,546	7.2%	-4.9
	17,977	28.9%	124,442	40.8%	-29.2
	2,779	91.4%	12,072	87.2%	4.8
	207	6.8%	904	6.5%	4.6
	15	5.1	68	5.0	See "Understanding the Data"
	5	1.1	42	1.9	See "Understanding the Data"
	8	4.6	57	6.3	See "Understanding the Data"
		41.6%		40.3%	3.2
		16.8%		19.5%	-13.8
		23.3%		21.4%	8.9
	429	7.3	2,350	8.2	-10.4
	6,105	10.3%	39,896	14.3%	-28.0
	3,772	6.5%	23,282	8.2%	-20.7
	8,511	14.6%	56,823	19.9%	-26.6
	9,670	24.0%	69,093	34.9%	-31.2
	\$47,669		\$39,212		21.6
	5,210	3.3%	32,130	4.6%	-28.3
	85	6.3	532	7.6	-17.1
	71	4.1	575	6.5	-36.9
	1,612	57.1	8,539	59.2	-3.5
	28	1.1	145	1.0	See "Understanding the Data"
	2,604	87.8%	13,219	87.4%	0.5
	335	2.7%	1,678	2.7%	0.0
	2,000	78.8%	9,219	69.2%	13.9
	6,359	16.2%	37,573	18.4%	-12.0

* rate per 1,000

** rate per 10,000