

UNDERSTANDING THE DATA

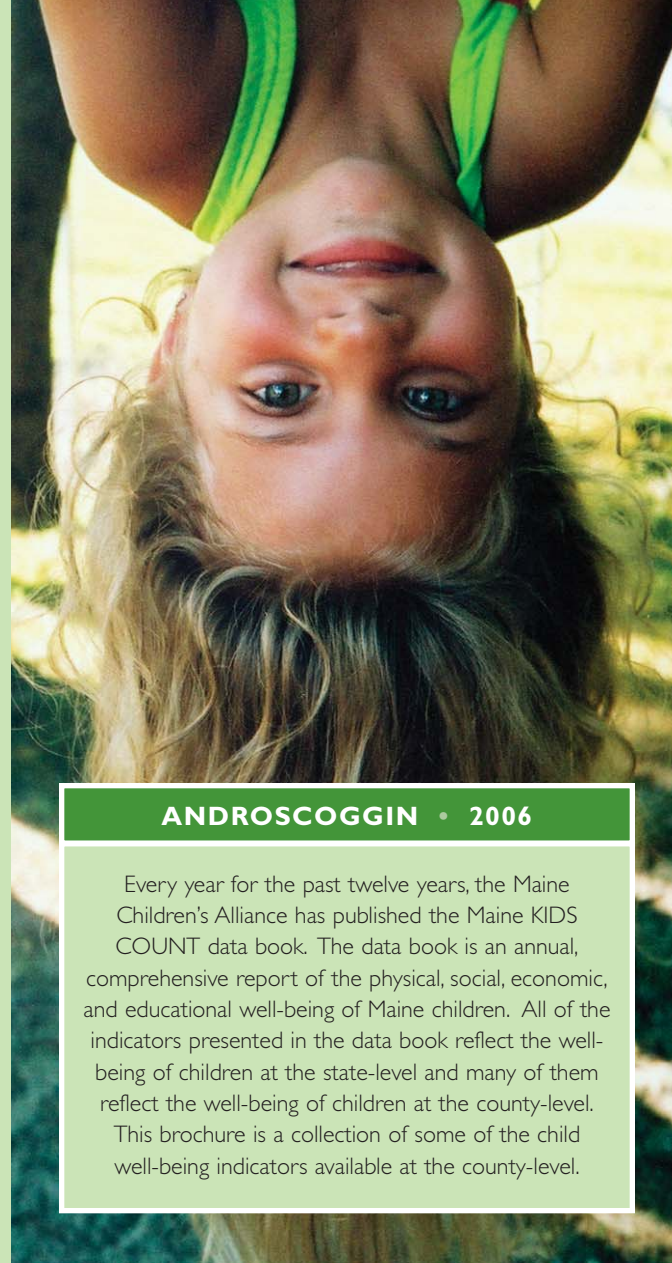
In order to understand the indicators, it is necessary to know what is being measured and how. Detailed definitions and data sources inside the brochure provide a comprehensive definition of each indicator and an explanation of how and by whom the data are collected and measured.

Whenever possible, for each indicator, we report a number. We also report a percentage or rate for each indicator. This is simply the number of times the event occurs, divided by the total population of the county or state that could experience the event. We report the indicators as percents or rates in order to accurately compare groups of different population size.

For the majority of the indicators, we compare the county rate to the state rate. This is expressed as a percent above or below the statewide average for the indicator. When looking at these percents, it is important to understand that large percents resulting from the difference between the county rate and the state rate may be due to small numbers. This does not mean that these differences are not important, but that these differences should be interpreted carefully. **It should be noted that we chose not to compare the county rate to the state rate of four indicators because of small numbers.**

The comparison of the county rates to the state rates was computed by subtracting the value for the state rate from the value for the county rate, and then dividing that quantity by the value for the state rate. The results are multiplied by 100 for readability.

Maine KIDS COUNT



ANDROSCOGGIN • 2006

Every year for the past twelve years, the Maine Children's Alliance has published the Maine KIDS COUNT data book. The data book is an annual, comprehensive report of the physical, social, economic, and educational well-being of Maine children. All of the indicators presented in the data book reflect the well-being of children at the state-level and many of them reflect the well-being of children at the county-level. This brochure is a collection of some of the child well-being indicators available at the county-level.



FOR MORE INFORMATION

on the Maine Children's Alliance, the Maine KIDS COUNT project, or the data in this brochure, visit the MCA website at www.mekids.org or contact the office at (207) 623-1868.

THIS BROCHURE WAS MADE POSSIBLE WITH FUNDING FROM:

Bank of America



ANDROSCOGGIN COUNTY

DEMOGRAPHICS

Total population - 2003 estimate	106,115					
Children age 0-17	23,457	22.1%	1,305,728	21.9%		1.1
Children age 10-17	11,533	10.9%	144,320	11.1%		-1.7
Children age 1-14	17,757	16.7%	216,051	16.5%		1.1
Children age 15-19	7,834	7.4%	93,546	7.2%		3.0

PHYSICAL AND MENTAL HEALTH

Children participating in MaineCare, SFY 2005	12,060	48.2%	124,442	40.8%		18.1
Live births for which prenatal care began in the first trimester, 2003	1,195	89.6%	12,072	87.2%		2.8
Low birth-weight infants, 2003	119	8.9%	904	6.5%		36.9
Infant mortality, 1999-2003 annual average *	7	5.5	68	5.0		See "Understanding the Data"
Child deaths (age 1-14), 1999-2003 annual average **	2	1.3	42	1.9		See "Understanding the Data"
Teen deaths (age 15-19), 1999-2003 annual average **	3	4.5	57	6.3		See "Understanding the Data"
High school students reporting alcohol use in the past 30 days, 2006		36.3%		40.3%		-9.9
High school students reporting cigarette use in the past 30 days, 2006		17.0%		19.5%		-12.8
High school students reporting marijuana use in the past 30 days, 2006		20.6%		21.4%		-3.7
Children (age 0-17) in the care or custody of DHHS, December 2005 *	146	6.2	2,350	8.2		-24.1

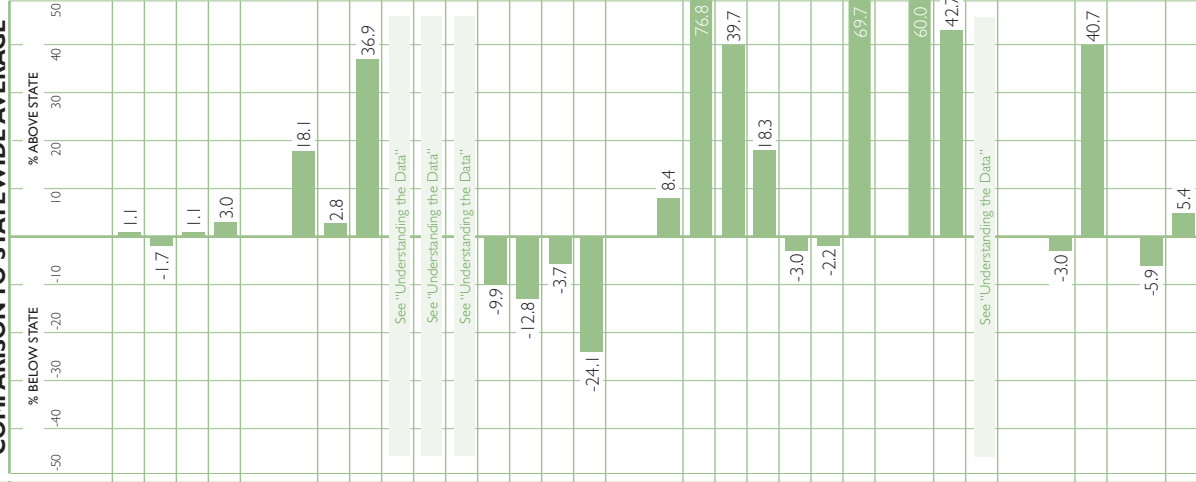
SOCIAL AND ECONOMIC STATUS

Children in poverty, 2003	3,680	15.5%	39,896	14.3%		8.4
Children receiving TANF, December 2005	3,400	14.5%	23,282	8.2%		76.8
Children receiving food stamps, December 2005	6,520	27.8%	56,823	19.9%		39.7
School children receiving subsidized school lunch, 2005-06	6,399	41.3%	69,093	34.9%		18.3
Median household income, 2003	\$38,054		\$39,212			-3.0
Unemployment, 2004	2,560	4.5%	32,130	4.6%		-2.2
Teen pregnancies (females age 10-17), 2003 *	73	12.9	532	7.6		69.7
Births to single teens (females age 10-19) who have not completed 12 years of school, 1999-2003 annual average *	75	10.4	575	6.5		60.0
Arrests of children (age 10-17), 2004 *	975	84.5	8,539	59.2		42.7
Arrests of children (age 10-17) for crimes against persons, 2004 *	22	2.0	145	1.0		See "Understanding the Data"

EDUCATION AND LEARNING

Public high school graduates, Class of 2004	1,066	84.8%	13,219	87.4%		-3.0
Public high school dropouts, 2003-04	200	3.8%	1,678	2.7%		40.7
Public high school graduates planning to attend post-secondary school, 2003-04	697	65.1%	9,219	69.2%		-5.9
Special education students (age 3-21), 2004-05	3,190	19.4%	37,573	18.4%		5.4

COMPARISON TO STATEWIDE AVERAGE



* rate per 1,000

** rate per 10,000